

Blatchford:

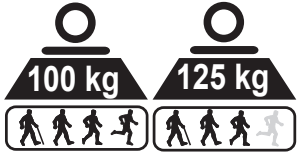
Blatchford Products Limited

Unit D Antura, Kingsland Business Park, Basingstoke, RG24 8PZ, UNITED KINGDOM

Tel: +44 (0) 1256 316600 Fax: +44 (0) 1256 316710

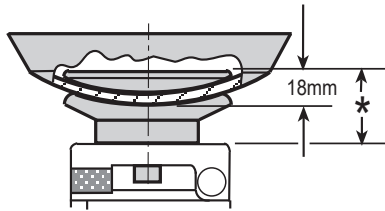
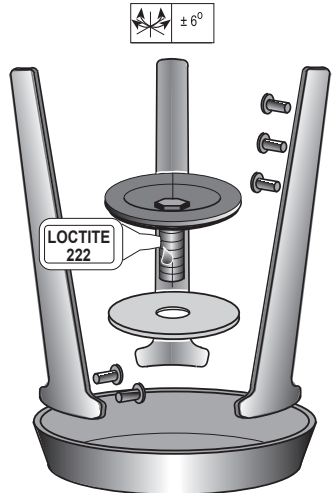
Email: sales@blatchford.co.uk www.blatchford.co.uk

Cup and Strut Kits for EUK and ESK Chassis 189117 - 189119



Length Adjustment Kits

- | | | |
|--------|--|---------|
| 189117 | Alignment Kit Standard, 10mm spacer, 100mm dia.cup | } *25mm |
| 189118 | Alignment Kit Standard, 10mm spacer, 115mm dia.cup | |
| 189119 | Alignment Kit Standard, 10mm spacer, 130mm dia.cup | |
| 189906 | Alignment Kit, 10mm Shortening, | } *15mm |
| 189707 | Alignment Kit, 10mm Lengthening, | |

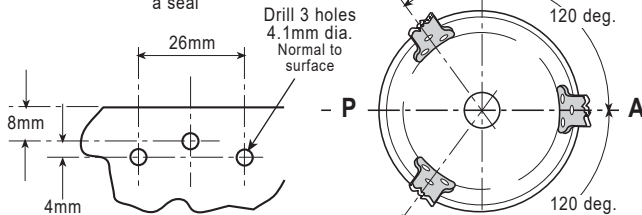


Set struts individually to suit socket alignment and curvature of socket

Snap Head Rivets 3 off per strut. Position struts and drill rivet holes as shown below

Apply a bead of silicone sealant all round to form a seal

Countersunk Rivets 3 per strut. Position according to length and shape of socket. 7/8" lg for poly/prop-GRP socket or 1/2" for metal socket



Strut Rivet Positions

Strut Orientation



934327/07-0819

Blatchford:

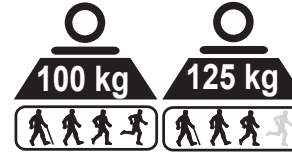
Blatchford Products Limited

Unit D Antura, Kingsland Business Park, Basingstoke, RG24 8PZ, UNITED KINGDOM

Tel: +44 (0) 1256 316600 Fax: +44 (0) 1256 316710

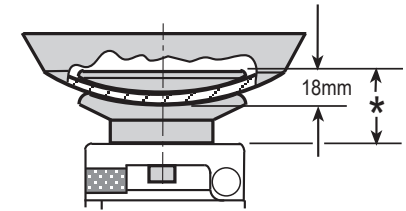
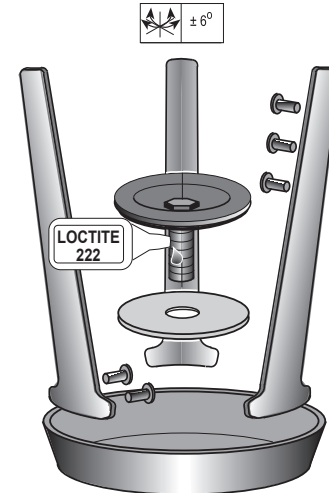
Email: sales@blatchford.co.uk www.blatchford.co.uk

Cup and Strut Kits for EUK and ESK Chassis 189117 - 189119



Length Adjustment Kits

- | | | |
|--------|--|---------|
| 189117 | Alignment Kit Standard, 10mm spacer, 100mm dia.cup | } *25mm |
| 189118 | Alignment Kit Standard, 10mm spacer, 115mm dia.cup | |
| 189119 | Alignment Kit Standard, 10mm spacer, 130mm dia.cup | |
| 189906 | Alignment Kit, 10mm Shortening, | } *15mm |
| 189707 | Alignment Kit, 10mm Lengthening, | |

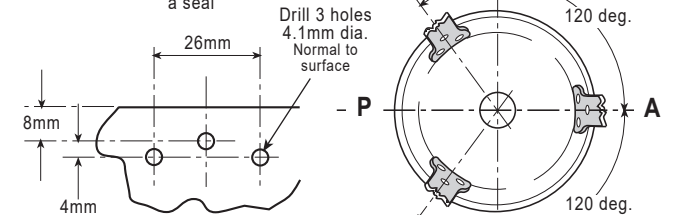


Set struts individually to suit socket alignment and curvature of socket

Snap Head Rivets 3 off per strut. Position struts and drill rivet holes as shown below

Apply a bead of silicone sealant all round to form a seal

Countersunk Rivets 3 per strut. Position according to length and shape of socket. 7/8" lg for poly/prop-GRP socket or 1/2" for metal socket



Strut Rivet Positions

Strut Orientation



934327/07-0819